

DEDON

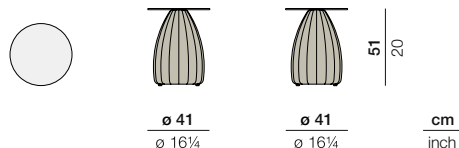
PORCINI

PORCINI

Side table

Design by **Lorenza Bozzoli** | Item code: **087038** | Weight **8 kg/18 lbs** | Volume **0,09 m³/3 cu ft**

Measurements



Collection: PORCINI by Lorenza Bozzoli is a collection of sculptural side tables as practical and versatile as they are delightful to the eye. Named after the beloved Italian mushrooms they casually resemble, the tables come in four heights and four elegant colorways. PORCINI integrates with any DEDON collection and looks great when displayed in a mix of shapes and sizes.

Side table: The PORCINI side table features a base of woven fiber in combination with nautical rope and a top of high-impact industrial ceramic.

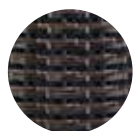
Frame: Aluminum

Finishing: The woven base is electrostatic powder-coated in a color similar to that of the fiber, then woven with fiber and rope.

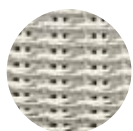
Characteristics: Sculptural, artistic, organic, surprising, practical

Frame Maintenance: Clean with a soft cloth and warm water.

Fiber Standard



116
marrone



117
carrara



148
bosco



147
alba

Ceramic Standard



301
black



308
taupe

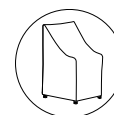


133
nori



123
terra

Additional Items



Cover

56087038000

To learn more about DEDON, our collections and warranty policy, please visit our website –

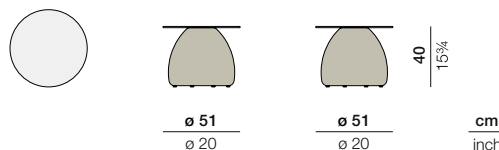
www.dedon.de

PORCINI

Side table

Design by **Lorenza Bozzoli** | Item code: **087036** | Weight **9 kg/20 lbs** | Volume **0,11 m³/4 cu ft**

Measurements



Collection: PORCINI by Lorenza Bozzoli is a collection of sculptural side tables as practical and versatile as they are delightful to the eye. Named after the beloved Italian mushrooms they casually resemble, the tables come in four heights and four elegant colorways. PORCINI integrates with any DEDON collection and looks great when displayed in a mix of shapes and sizes.

Side table: The PORCINI side table features a base of woven fiber in combination with nautical rope and a top of high-impact industrial ceramic.

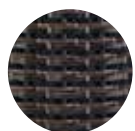
Frame: Aluminum

Finishing: The woven base is electrostatic powder-coated in a color similar to that of the fiber, then woven with fiber and rope.

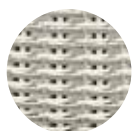
Characteristics: Sculptural, artistic, organic, surprising, practical

Frame Maintenance: Clean with a soft cloth and warm water.

Fiber Standard



116
marrone



117
carrara



148
bosco



147
alba

Ceramic Standard



301
black



308
taupe

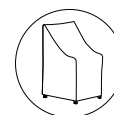


133
nori



123
terra

Additional Items



Cover

56087036000

To learn more about DEDON, our collections and warranty policy, please visit our website –

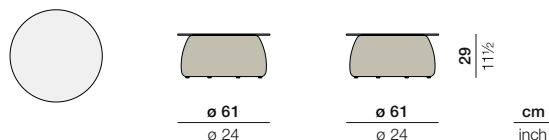
www.dedon.de

PORCINI

Side table

Design by **Lorenza Bozzoli** | Item code: **087034** | Weight **12,5 kg/28 lbs** | Volume **0,11 m³/4 cu ft**

Measurements



Collection: PORCINI by Lorenza Bozzoli is a collection of sculptural side tables as practical and versatile as they are delightful to the eye. Named after the beloved Italian mushrooms they casually resemble, the tables come in four heights and four elegant colorways. PORCINI integrates with any DEDON collection and looks great when displayed in a mix of shapes and sizes.

Side table: The PORCINI side table features a base of woven fiber in combination with nautical rope and a top of high-impact industrial ceramic.

Frame: Aluminum

Finishing: The woven base is electrostatic powder-coated in a color similar to that of the fiber, then woven with fiber and rope.

Characteristics: Sculptural, artistic, organic, surprising, practical

Frame Maintenance: Clean with a soft cloth and warm water.

Fiber Standard



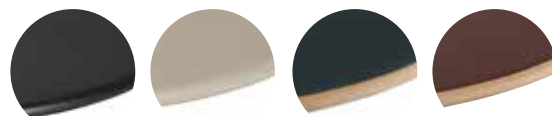
116
marrone

117
carrara

148
bosco

147
alba

Ceramic Standard



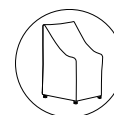
301
black

308
taupe

133
nori

123
terra

Additional Items



Cover

56087034000

To learn more about DEDON, our collections and warranty policy, please visit our website –

www.dedon.de

10/20

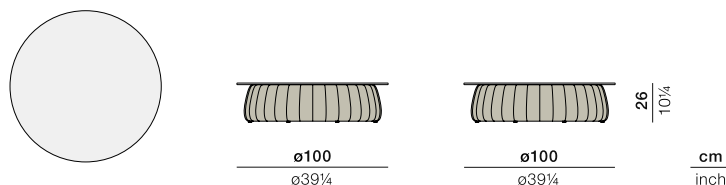
DEDON

PORCINI

Coffee table ø100 cm

Design by **Lorenza Bozzoli** | Item code: **87032** | Weight **26,9 kg/60 lbs** | Volume: **0,26 m³/10 cu ft**

Measurements



Collection: PORCINI by Lorenza Bozzoli is a collection of sculptural side tables as practical and versatile as they are delightful to the eye. Named after the beloved Italian mushrooms they casually resemble, the tables come in four heights and four elegant colorways. PORCINI integrates with any DEDON collection and looks great when displayed in a mix of shapes and sizes.

Coffee table: The PORCINI coffee table features a base of woven fiber in combination with nautical rope and a top of high-impact industrial ceramic.

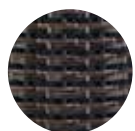
Frame: Aluminum

Finishing: The woven base is electrostatic powder-coated in a color similar to that of the fiber, then woven with fiber and rope.

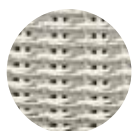
Characteristics: Sculptural, artistic, organic, surprising, practical

Frame Maintenance: Clean with a soft cloth and warm water.

Fiber Standard



116
marrone



117
carrara



148
bosco



147
alba

Ceramic Standard



301
black



308
taupe



133
nori



123
terra

Additional Items



Cover

56087032000

To learn more about DEDON, our collections and warranty policy, please visit our website –

www.dedon.de

10/20

DEDON